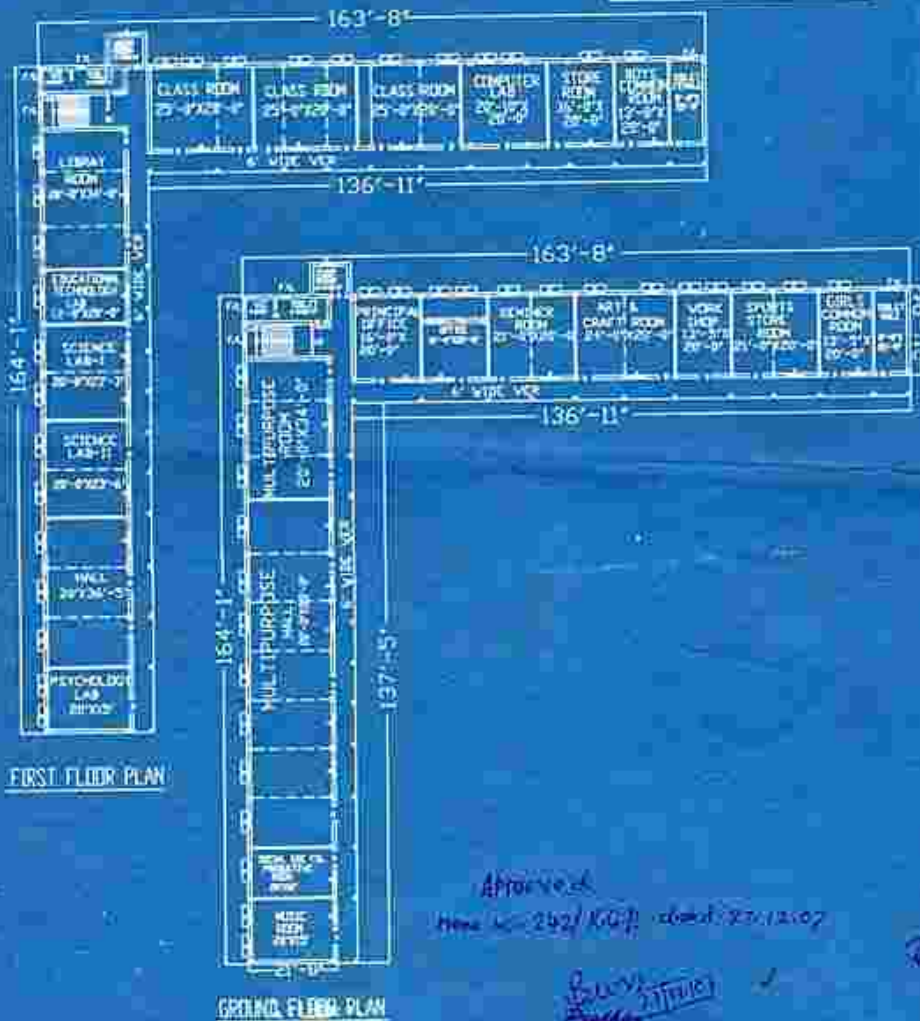


GOUR MALDA COLLEGE OF EDUCATION (B.ED) J.L. NO-101, MOUZ. JOTE GOPAL KAGMARI, PLOT NO-1768, KHATIAN NO-4864, UNDER KALIACHAK-II BLOCK IN DIST-MALDA.

BUILT UP AREA IN SQM=1547.00
 BUILT UP AREA IN SQFT=16652.00
 TOTAL LAND AREA=79.00 DECIMAL

DETAILS OF OPENING	
DOOR (D)	= 3'-6" X 7'-0"
DOOR (D)	= 2'-6" X 7'-0"
WINDOW (W)	= 4'-0" X 5'-0"
FAN LIGHT (F/L)	= 2'-0" X 2'-0"



MIDDLE SECTION OF BEAM
 SCALE-1"=2'-0"



END SECTION OF BEAM
 SCALE-1"=2'-0"



R.C.C. ROOF SECTION WITH WALL BEAM
 SCALE-1"=2'-0"



LINTEL DETAIL
 SCALE-1"=1'-0"



R.C.C. COLUMN DETAILS
 SCALE-1"=4'-0"



R.C.C. COLUMN DETAILS
 SCALE-1"=4'-0"



R.C.C. COLUMN FOOTING
 SCALE-1"=4'-0"



R.C.C. COLUMN FOOTING (VER)
 SCALE-1"=4'-0"

Approved
 Date: 24/10/2017

Signature: *[Signature]*
 Barham Ghosh
 District In-charge
 Khatian-II Panchayat Society
 P.O. Khatian, Dist. Malda

Signature: *[Signature]*
 Kanchan Misra
 District In-charge
 Khatian-II Panchayat Society
 P.O. Khatian, Dist. Malda

DRAWN BY: *[Signature]*
 Kanchan Misra
 District In-charge
 Khatian-II Panchayat Society
 P.O. Khatian, Dist. Malda